

## MAINTENANCE

### GEARBOX

#### Gearbox oil filter cleaning



#### Note

Carry out the following procedure after oil has been drained when replacing the gearbox oil.

- Unscrew the screw fastening the oil filter to the gearbox (1, Fig. 1).
- Remove the fastening screws (2, Fig. 1) placed under the bumper rim.
- Keep the bumper rim bent downwards and remove the oil filter (3, Fig. 2) from the gearbox.
- Clean and dry the filter.
- Install a new seal on the filter (4, Fig. 2).
- Introduce the oil filter in its seat so that the notch faces upwards; tighten the nut to **25 Nm**.
- Adjust the bumper lower screw.

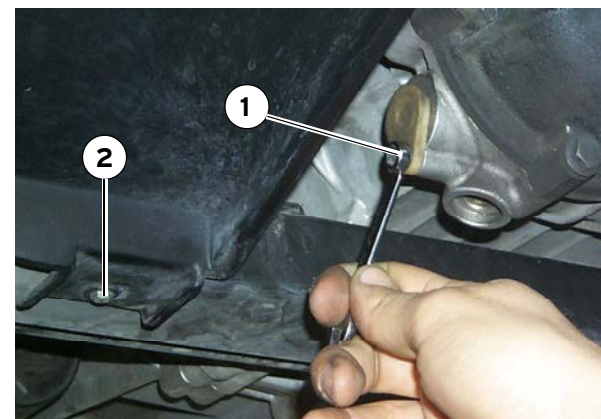


Fig. 1 Gearbox oil filter screw removal

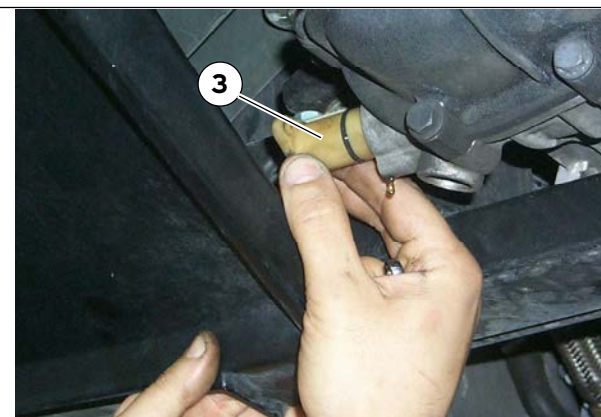
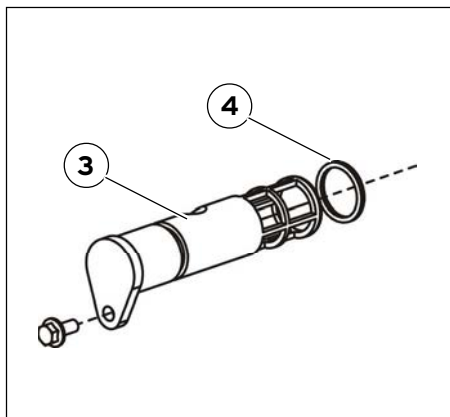


Fig. 2 Gearbox oil filter removal

**MAINTENANCE**  
**GEARBOX**



**Checking the hydraulic oil level (e-gear only)**

- Remove the engine trim lid.
  - Remove the left trim panel inside the engine compartment.
  - Loosen the two screws (1, Fig 1) and make the support with the e-gear hydraulic oil tank to slide into the inner engine compartment (arrow in fig 1).
  - Remove the tank plug and check the e-gear hydraulic oil level; the level must be between the min and max marks (Fig. 2) on the plug dipstick: if necessary top up only with the prescribed hydraulic oil type
- Prescribed hydraulic oil type: TUTELA CS SPEED**
- Tighten the plug
  - Slide the hydraulic oil tank back into the original place under the right bulkhead of the engine compartment
  - Tighten the two screws (1, Fig 1) to secure the slide of the e-gear hydraulic tank.
  - Reinstall the left trim panel inside the engine compartment.
  - Reinstall the engine trim lid.



Fig. 1 Screws of the e-gear hydraulic tank slide

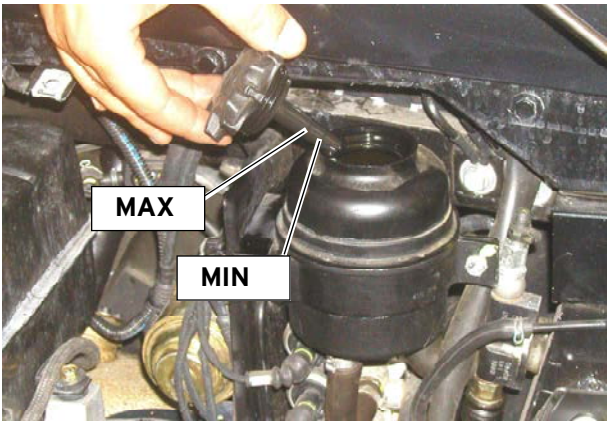


Fig. 2 MIN and MAX marks on plug dipstick

## MAINTENANCE

### GEARBOX



#### Checking the gearbox and rear differential oil

- Lift the vehicle using an overhead crane.
- Use a suitable collection system for the gearbox and rear differential oil.
- Unscrew the plug (1, Fig. 1) and check that the oil level is near the lower edge of the hole.

#### If the oil level is high

- Drain the excess oil from the oil level checking hole.
- Clean the plug (1, Fig. 1) and reassemble it; tighten to **45 Nm**.

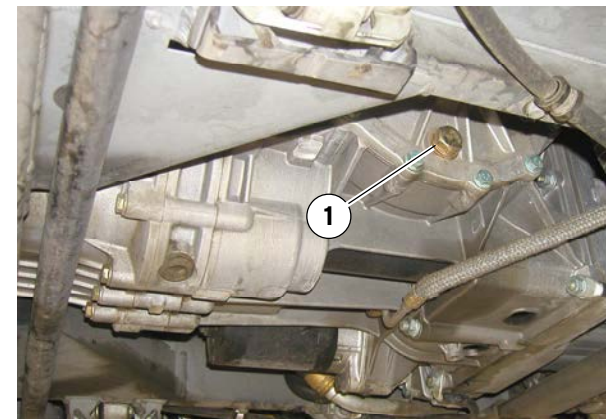


Fig. 1 Plug for checking the level of the transmission and rear differential oil

## MAINTENANCE

### GEARBOX

#### Checking the gearbox and rear differential oil



##### If the oil level is low

- Lower the vehicle and unscrew the gearbox and rear differential oil filling plug (**2**, Fig 2).
- Using a funnel and rubber hose, top up using a moderate amount of oil at a time until the oil starts to come out of the oil checking hole (**1**, Fig 1).
- Clean the plug (**2**, Fig 2) and screw it back on.
- Lift the vehicle, carefully clean the oil level checking hole (**1**, Fig 1) and then reassemble the plug; tighten it to **45 Nm**.



##### Protecting the environment

Dispose of the used transmission oil according to the laws in force.



##### Important!

The top up must always be carried out using the prescribed oil only

Type:	AGIP ROTRA LSX SAE 75W/50
Quantity	4 litres

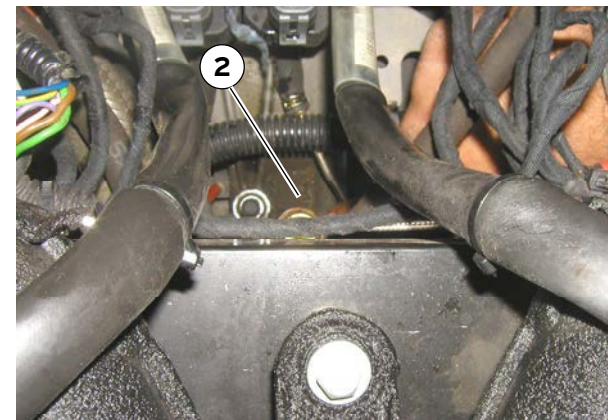


Fig. 2 Gearbox and rear differential oil filling plug



Fig. 3 Topping up the gearbox and rear differential oil